



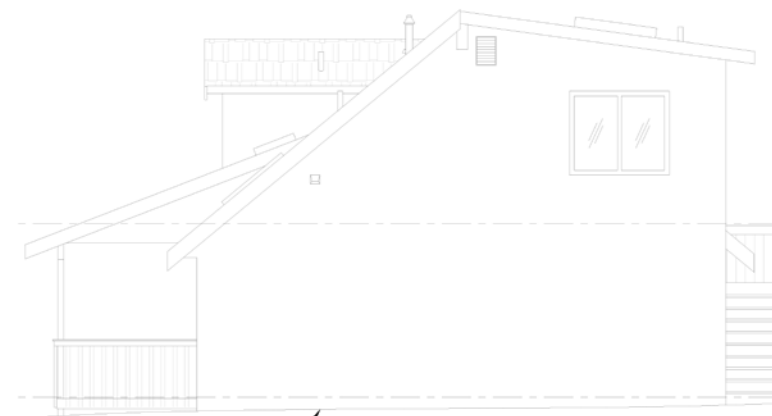
AS-BUILT - SOUTH ELEVATION



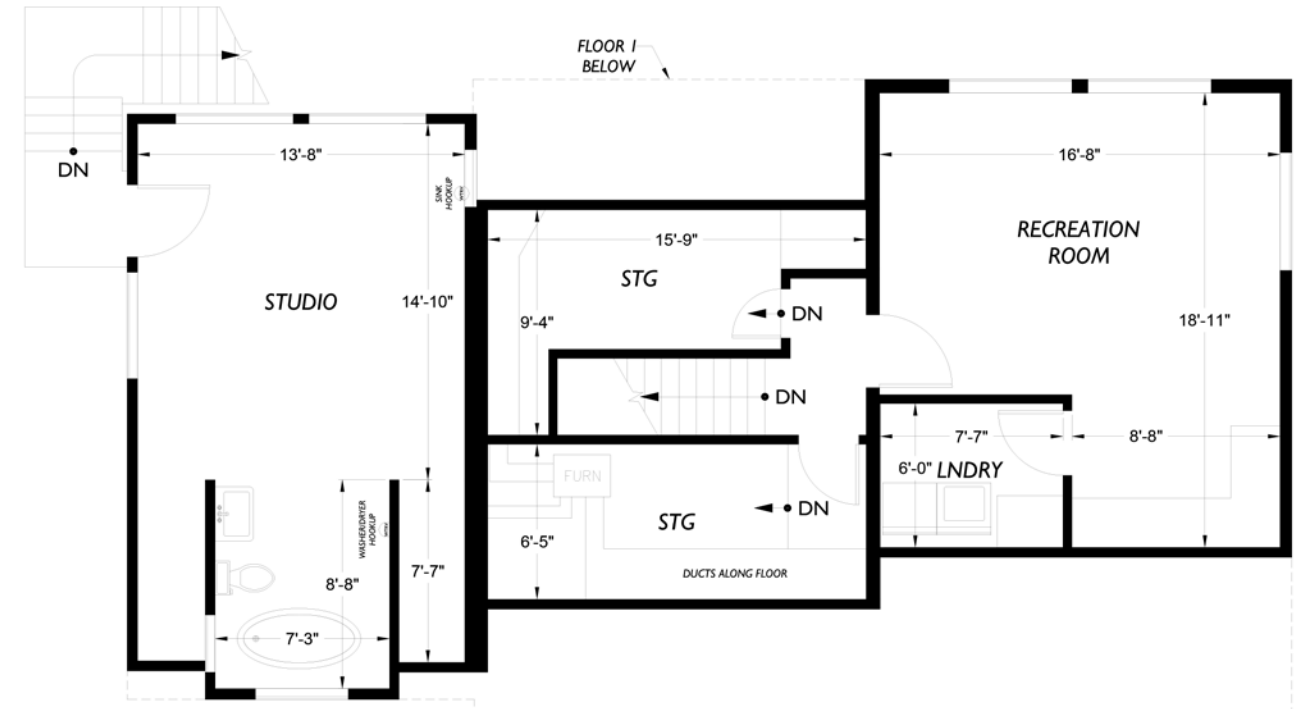
AS-BUILT - NORTH ELEVATION



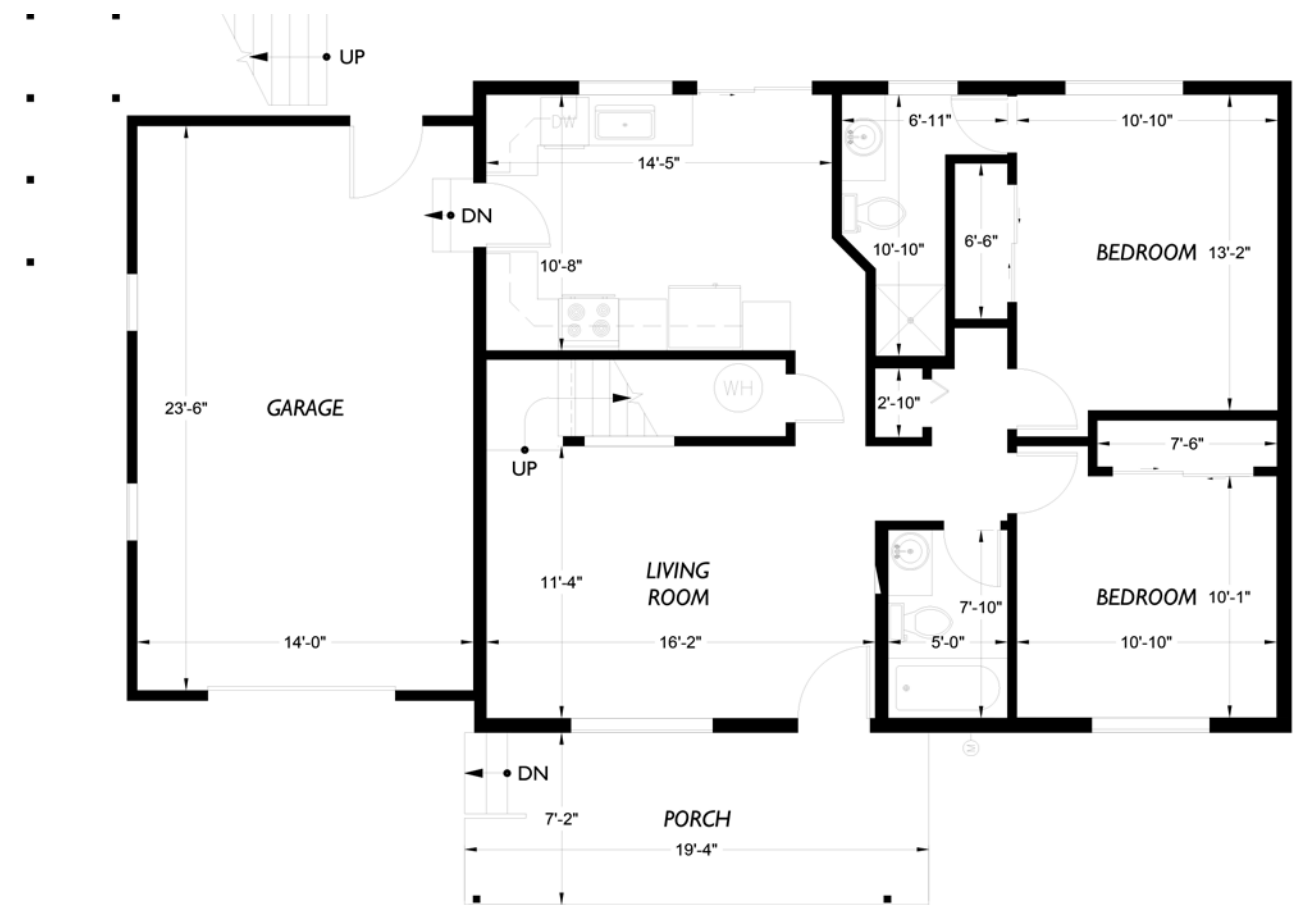
AS-BUILT - WEST ELEVATION



AS-BUILT - EAST ELEVATION



AS-BUILT - FLOOR PLAN LEVEL 2



AS-BUILT - FLOOR PLAN LEVEL 1



A white chair covered in Hemp
 Jin mohair is the perfect perch for
 enjoying views of the Seattle skyline
 and the local wildlife - from eagles
 flying overhead to seals swimming
 by. The accent table is by Melville
 Sherry and the hemp rug is from Rug
 Art. Underneath is the existing concrete
 floor with exposed aggregate.





WARM MODERNISM
REFINED VS RUSTIC



HEARTH AS HEART
- Fireplace central feature



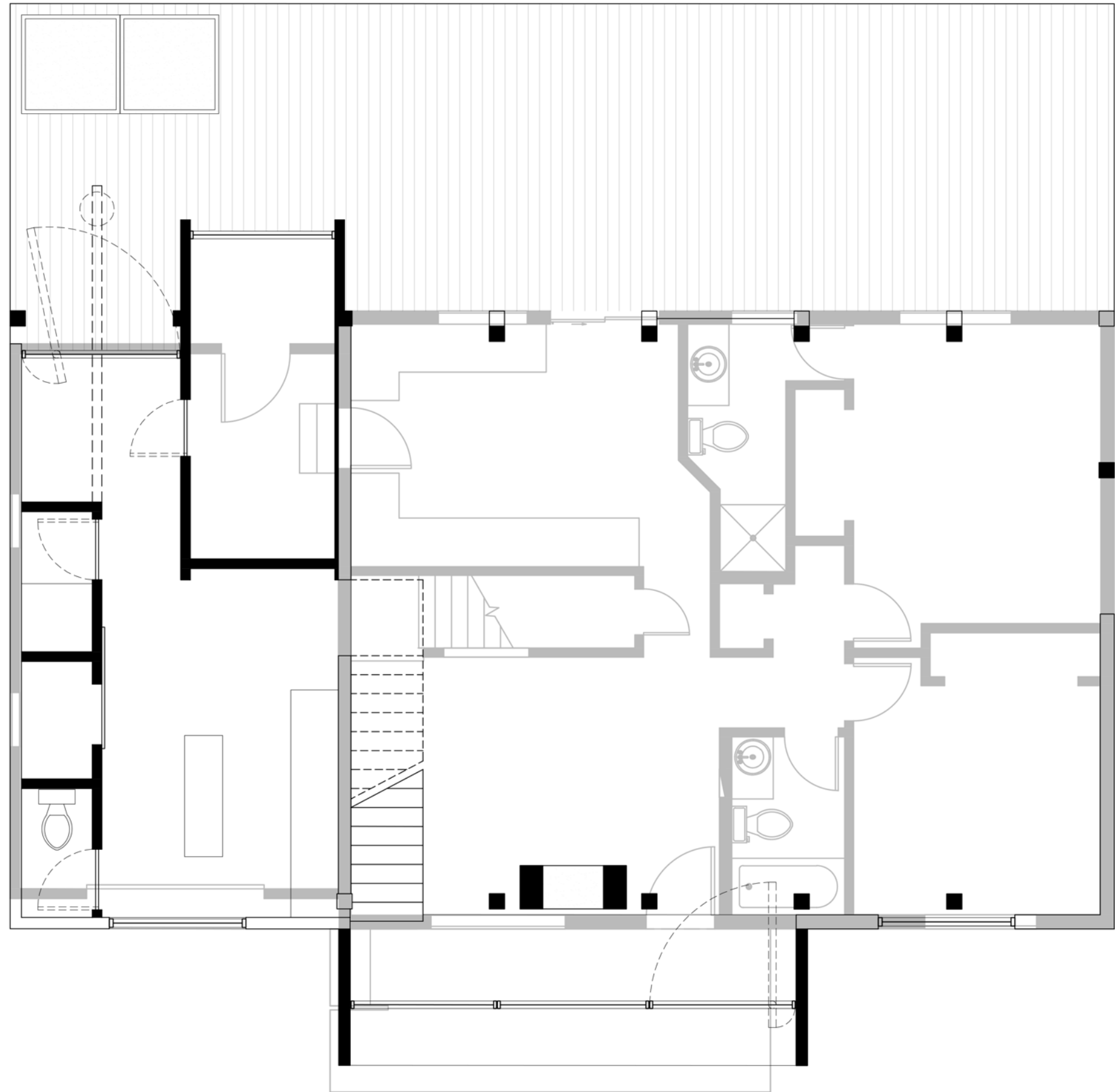
PROTECTIVE
- “wing or nest”



LANTERN IN THE FOREST
- illumination in the dark



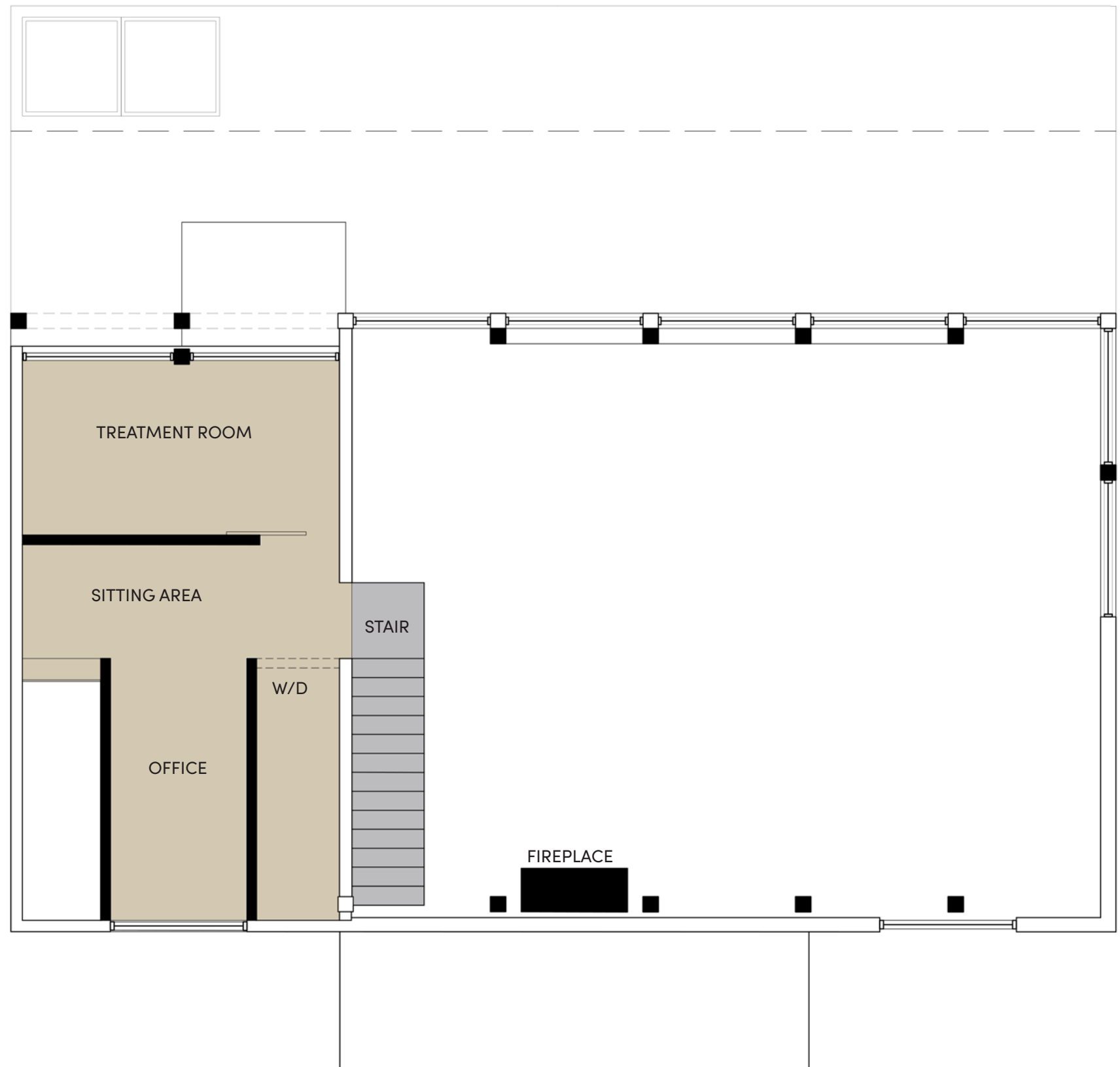
FOREST WITHIN A FOREST
- Opening to the woods
- Structure evokes trees



FLOOR PLAN LEVEL 1 - NEW OVER EXISTING



FLOOR PLAN LEVEL 1 - NEW

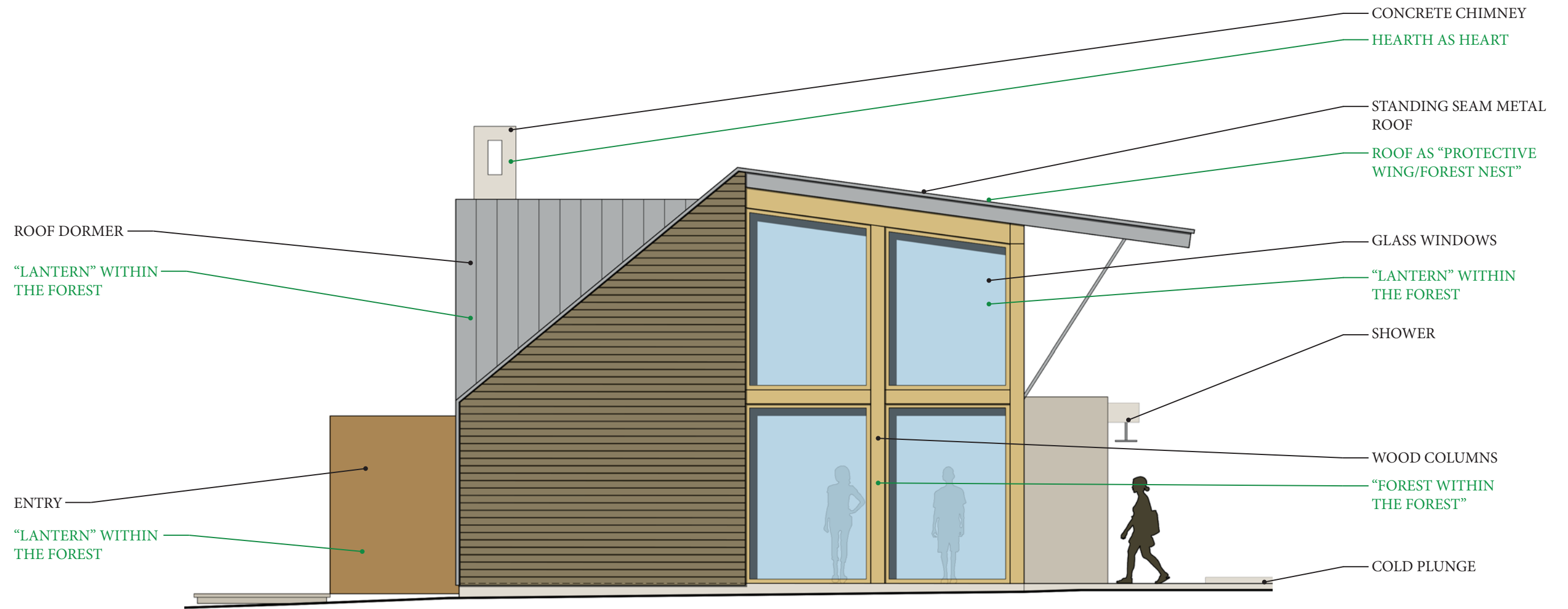


FLOOR PLAN LEVEL 2 - NEW



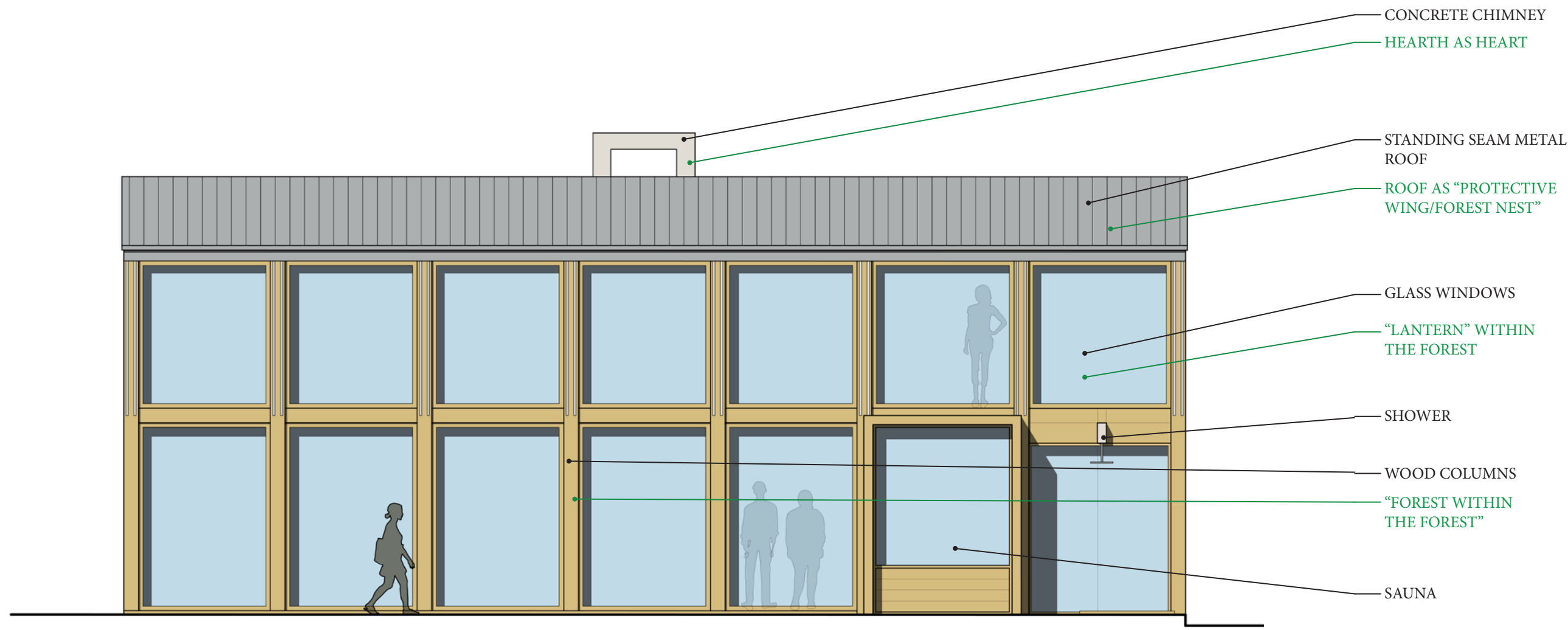
SOUTH ELEVATION - OPTION 1

"WARM MODERNISM"
 -CONCRETE
 -NATURE WOOD
 - METAL ROOF
 - CORTEN STEEL



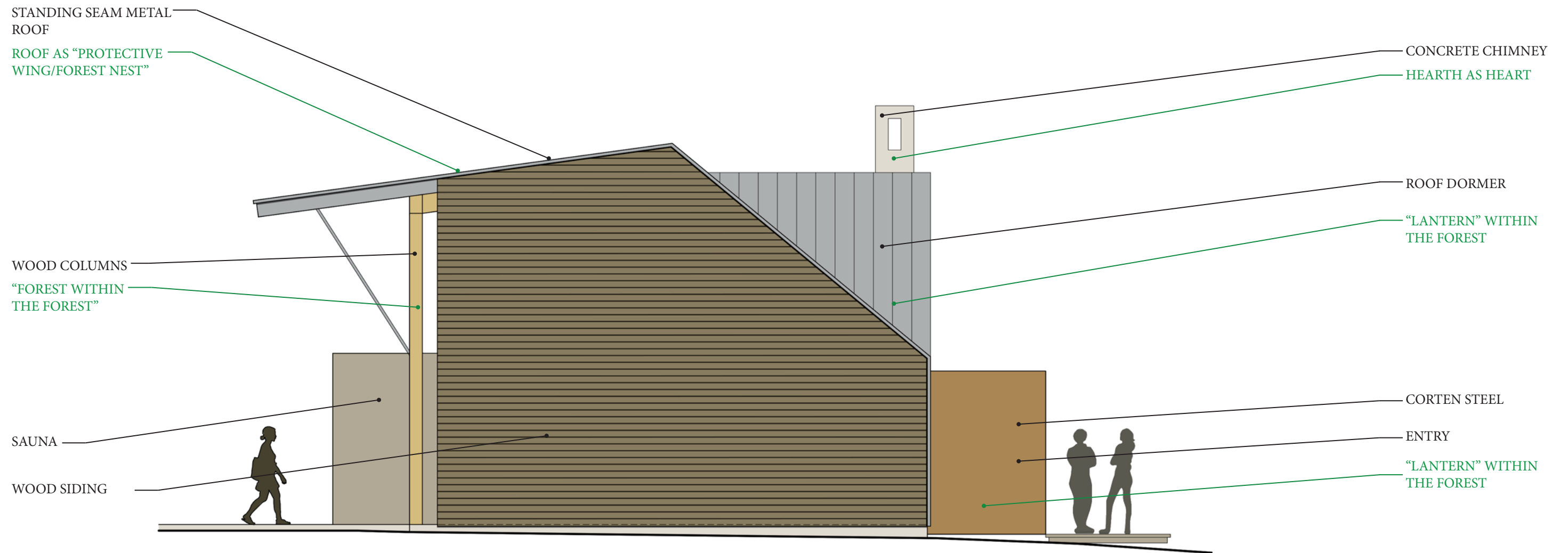
EAST ELEVATION - OPTION 1

"WARM MODERNISM"
 -CONCRETE
 -NATURE WOOD
 - METAL ROOF
 - CORTEN STEEL



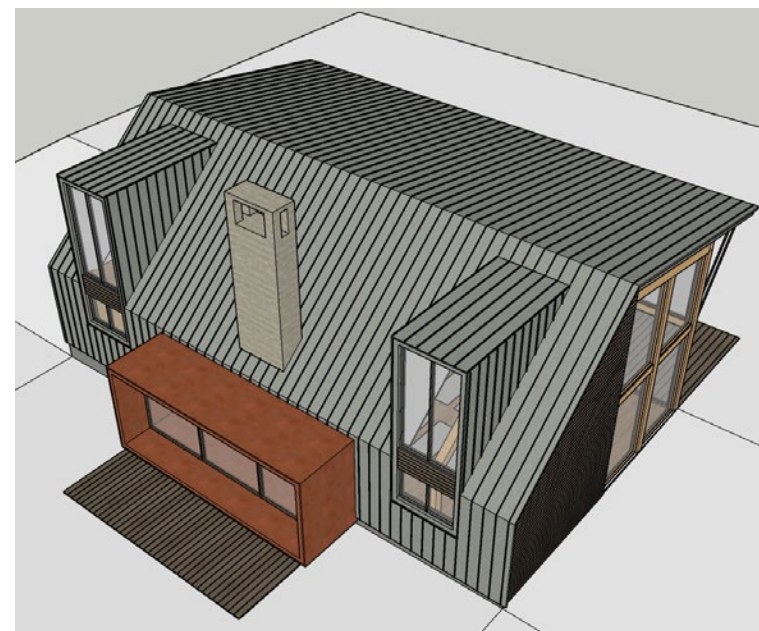
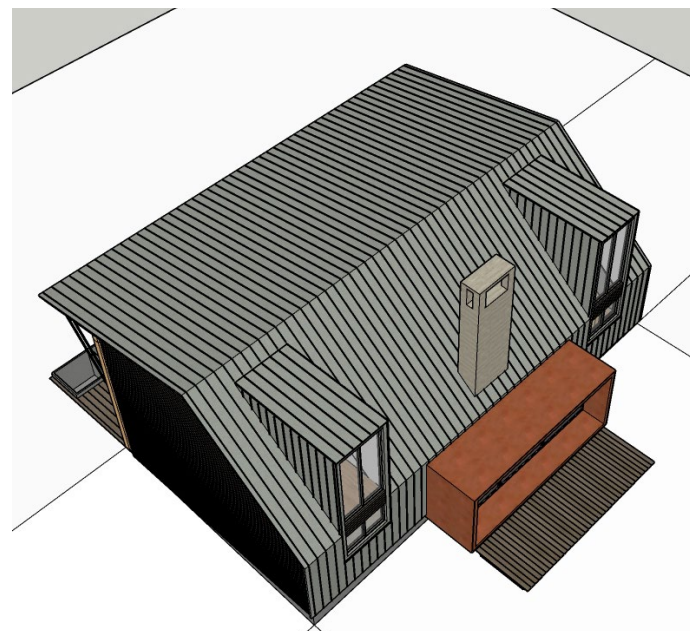
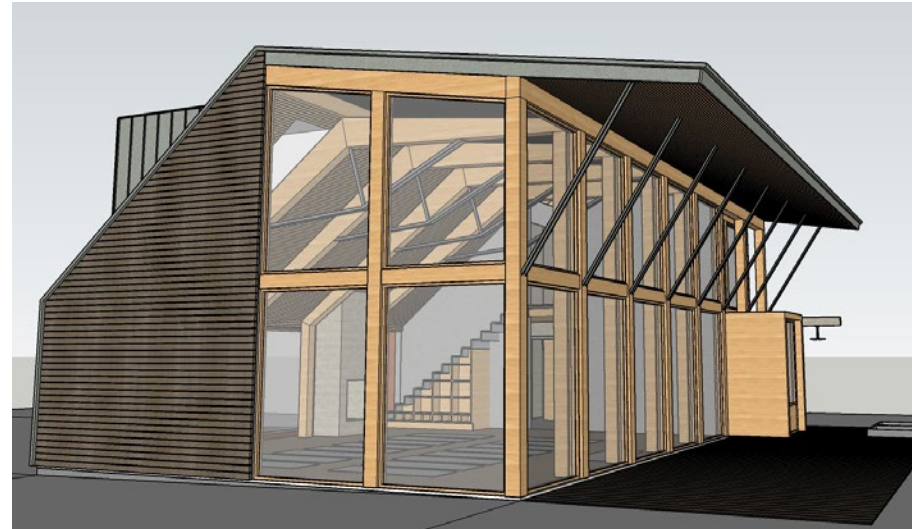
NORTH ELEVATION - OPTION 1

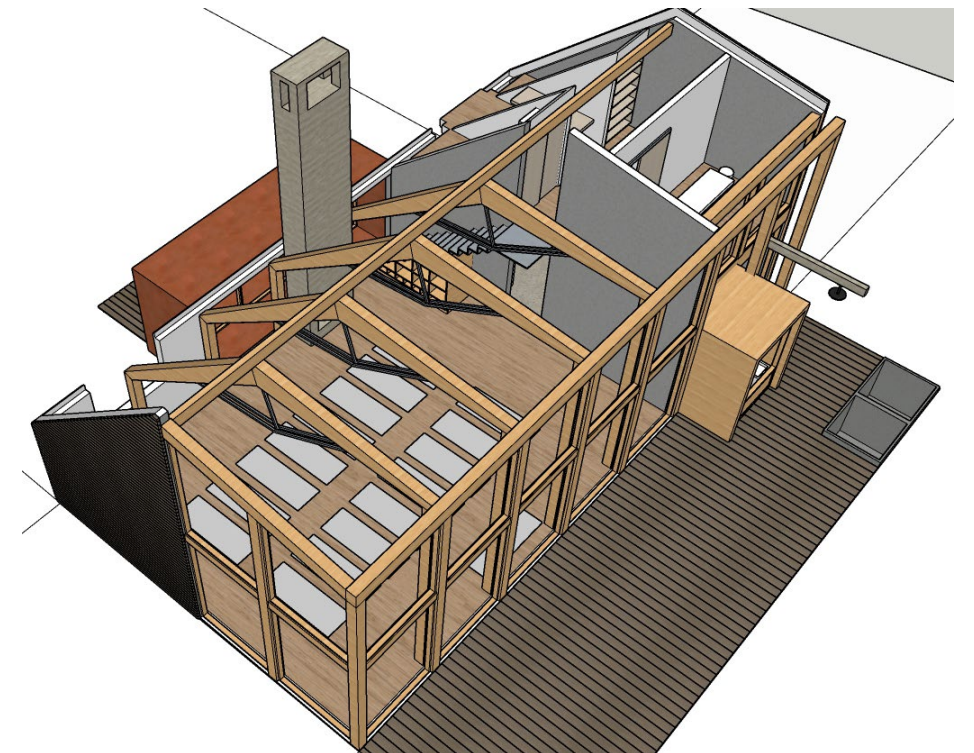
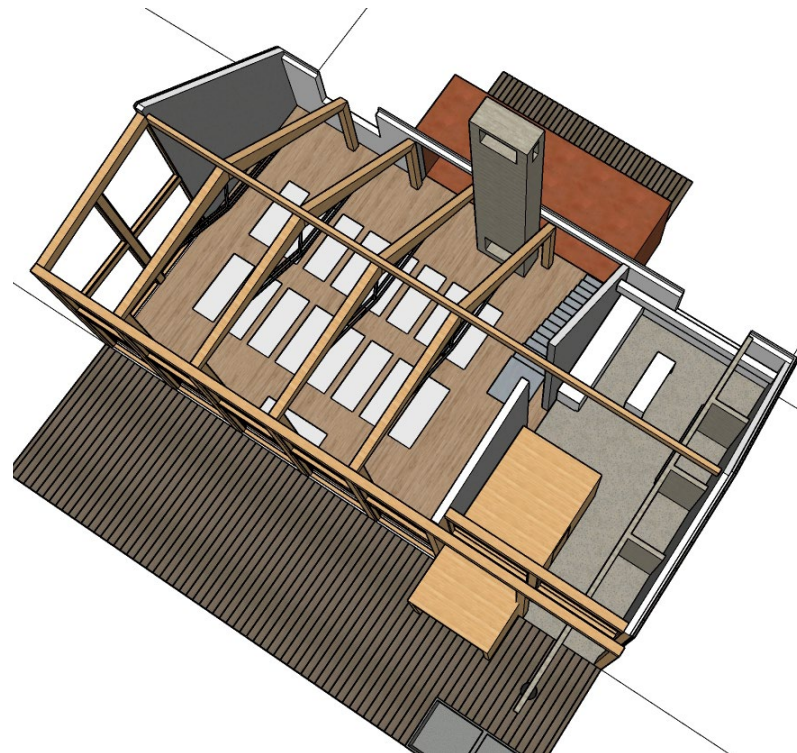
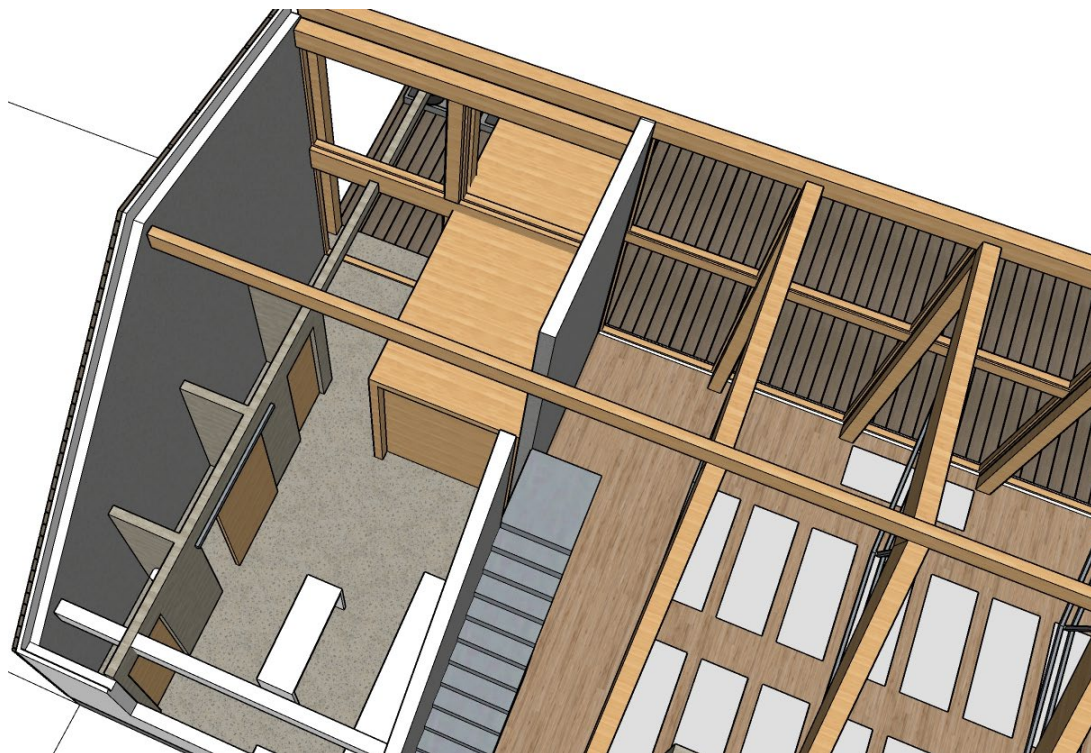
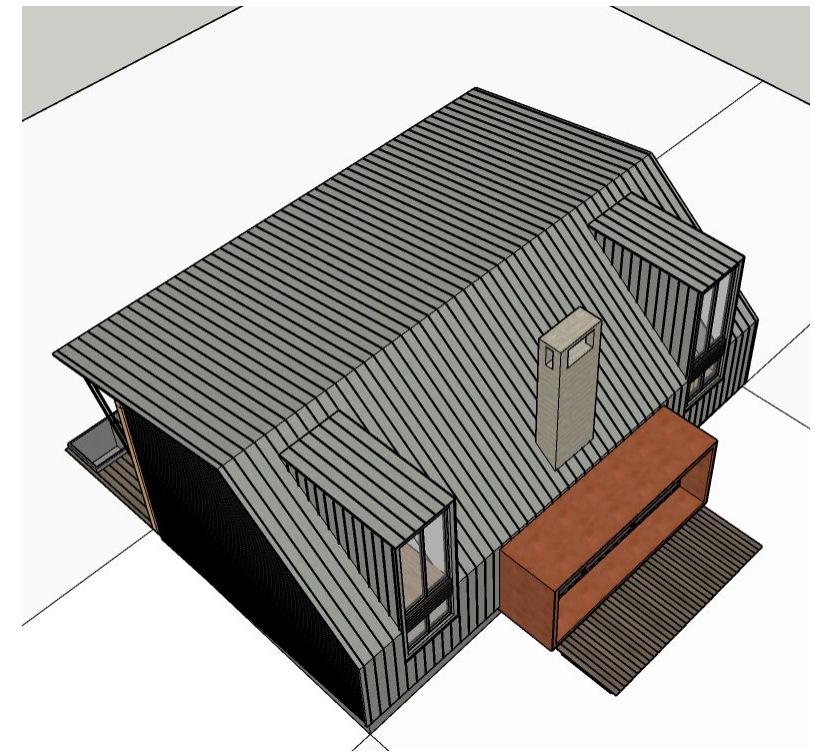
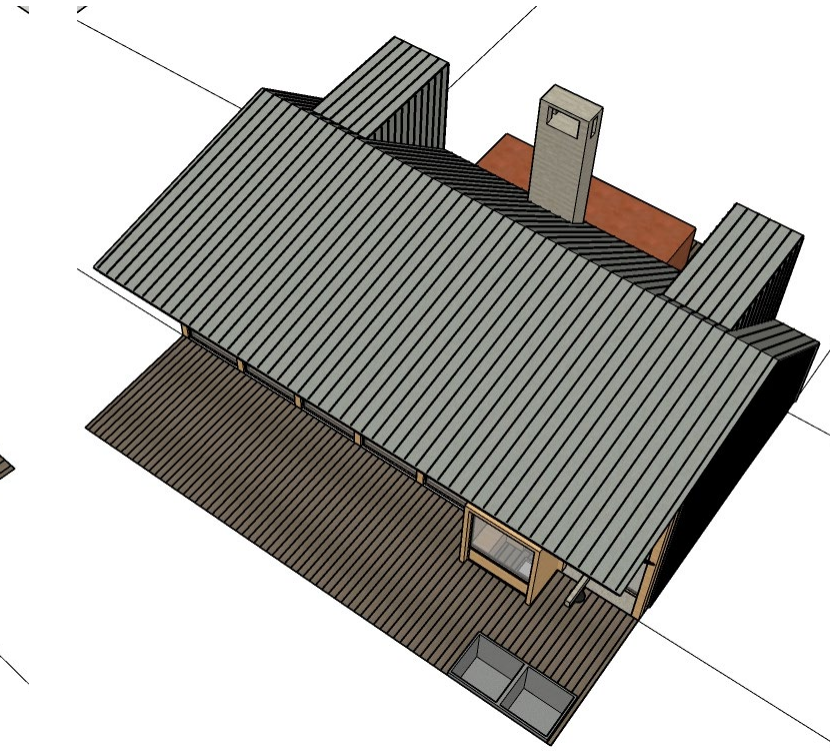
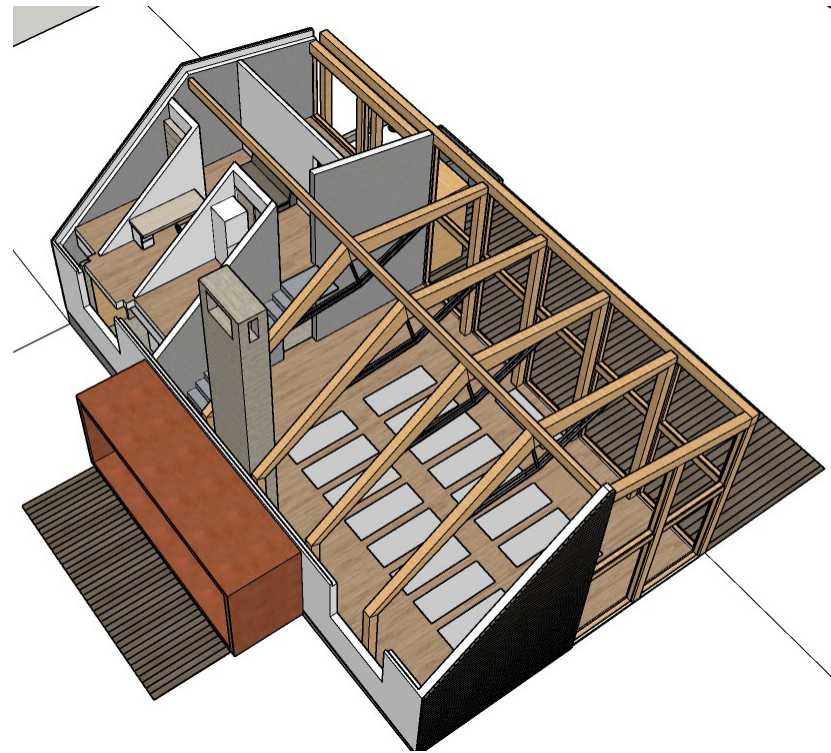
"WARM MODERNISM"
 -CONCRETE
 -NATURE WOOD
 - METAL ROOF
 - CORTEN STEEL



WEST

"WARM MODERNISM"
 -CONCRETE
 -NATURE WOOD
 - METAL ROOF
 - CORTEN STEEL







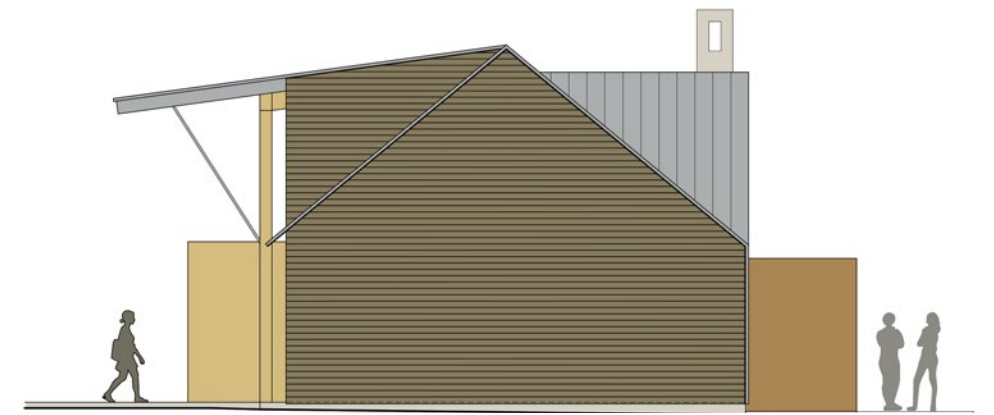
COST REDUCTION STRATEGIES:

3 ways to impact construction cost: **Scope, Quality, Budget.**

1. Eliminate level 2 program - saves; stairs, plumbing, windows, flooring, dormer, ceiling, etc.....minimize entry.
 2. Eliminate roof dormers.
 3. Chimney - change to metal flue.
4. Roof Material - change metal to asphalt or cedar shingles.
5. Interior Ceiling - no wood slats painted sheetrock.
6. Less windows.



NORTH ELEVATION OPTION 1B



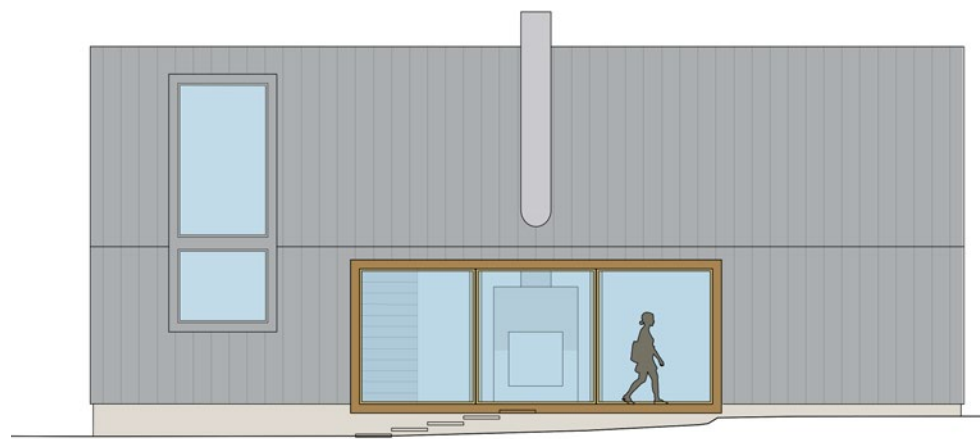
WEST ELEVATION OPTION 1B



SOUTH ELEVATION OPTION 1E



SOUTH ELEVATION OPTION 1D



SOUTH ELEVATION OPTION 1C



SOUTH ELEVATION OPTION 1B

EMF - (electromagnetic field radiation)

Architectural shielding against electromagnetic radiation

Electromagnetic shielding strategies are increasingly incorporated in the construction of new buildings, and are easily retrofitted in existing constructions to reduce radiation intensity in living or working spaces.

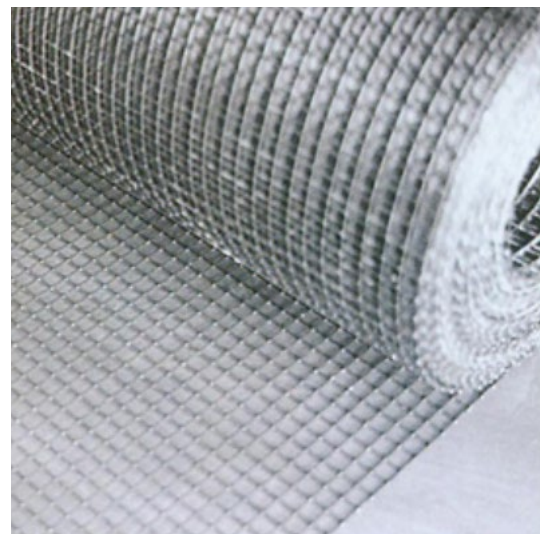
Architectural shielding materials are used to reduce the exposure of a building's occupants to electromagnetic radiation emitted by nearby sources of microwave and radiofrequency radiation, and to protect sensitive electronic equipment from interference.

5 protective options:

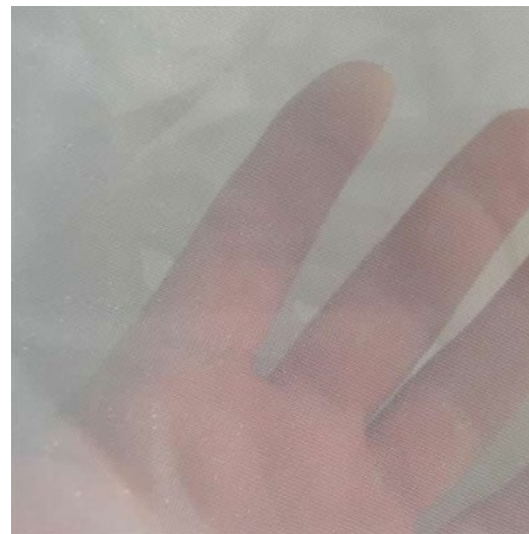
1. Conductive shield paintings
2. Shielding meshes and fleeces
3. Shielding textiles
4. Window films
5. Ground connections



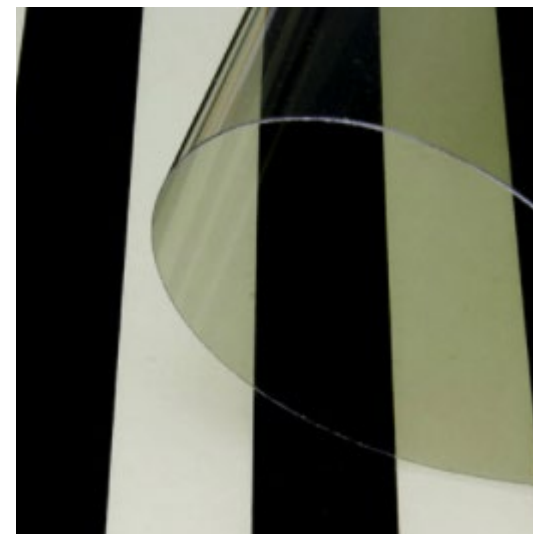
Shield Paint:
- interior or exterior.
- carbon particles suspended in acrylic paint.



Shield Meshes & Fleeces
- on framing or sheathing.



Shield Textiles
- Curtains?



Window Films
- Applied to glass



Earth shield system
- similare to grounded a circuit panel.



FOREST HEART

